



www.agbudget.co.uk Luxury Swimming Pool Equipment at Budget Prices

High Intensity LED Pool Lights

LED LumiPlus illumination and decoration - HIGH POWER LED TECHNOLOGY -

LumiPlus HIGH POWER LED TECHNOLOGY



Personalise your pool with the technology of the future

It's time to "change your chip" - AstralPool presents the new LumiPlus range, a groundbreaking system of pool lighting. Personalise your pool, create colour moods and enjoy a truly original pool.

With LumiPlus you can programme colour sequences automatically, adapting your pool environment as you wish. Don't forget that this system is quick and easy to instal, lasts 100 times longer than a conventional lighting system, consumes up to 80% less electricity and can be programmed via a remote control.

LumiPlus lets you play with colour creating a wide range of different moods. By combining vivid colours you can create a lively fun feel whilst using more subtle harmonious colours you will create an atmosphere of well-being and relaxation.

LumiPlus is the colour lighting system which allows you to reinvent your pool every day.

	ROJO	RED
	NARANJA	ORANGE
	AMARILLO	YELLOW
	AMARILLO TENUE	PALE YELLOW
	MAGENTA	MAGENTA
	MAGENTA CLARO	LIGHT MAGENTA
	PURPURA	PURPLE
	CYAN	CYAN
	CYAN CLARO	LIGHT CYAN
	BLANCO AZULADO	BLUISH WHITE
	CYAN VERDOSO	GREENISH BLUE
	BLANCO VERDOSO	GREENISH WHITE

Gama de colores LumiPlus / Range of LumiPlus colours

Characteristics:

- LumiPlus uses high power LEDs Luxeon, a guarantee of quality.
- Luxeon LEDs have a working life of 100,000 hours compared to only 1,000 hours for conventional lamps.
- Make use of your current installation! There is no need to change either the transformer or the cabling. With the new LumiPlus PAR 56 you can directly replace a conventional lamp with a LumiPlus LED.
- Long guarantee: 5 years for LEDs, 3 years for projectors and PAR-56 lamps and 2 years for Standard, Plano and Mini projectors.
- PVC housing: Full anti-corrosion and UV ray protection.
- Maintenance free.



Convenience

Remote control your LumiPlus lighting system.

LumiPlus Flat

Available in white or coloured lighting. ABS niche and faceplate.



Colour therapy

Red, blue, green, yellow, white – you can programme at least 7 colours in 7 different sequences. The receptor-modulator allows you to extend this range to 12 colours and 9 sequences.

Low power consumption

The concept of respect for the environment is an integral part of the design of LumiPlus, with its low electrical consumption. High intensity LEDs use far less electricity than conventional lighting (Maximum consumption: 60 Watts).



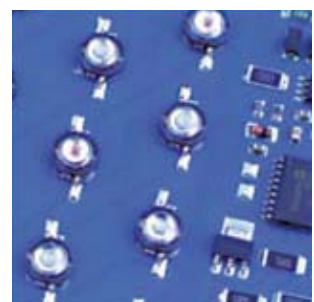
Tips from Dr.Pool

Installation is very easy.

- The LumiPlus PAR 56 adapts easily to existing projectors on the market. There is no need to change either the transformer or the cabling.

Important:

- The projector should not be handled under any circumstances, as this would make the guarantee null and void.



LumiPlus Standard (light guts):

Available in white or coloured lighting. Faceplate in ABS or Stainless steel. With inserts or self-tappers.



LumiPlus Standard (complete with niche)

Available in white or coloured lighting. ABS niche and ABS or stainless steel faceplate. Available with an insert or self-tappers.



LumiPlus Mini

Available in white or coloured lighting. ABS niche and faceplate. Available with rapid coupling system or niche or prefabricated pools (with nut).



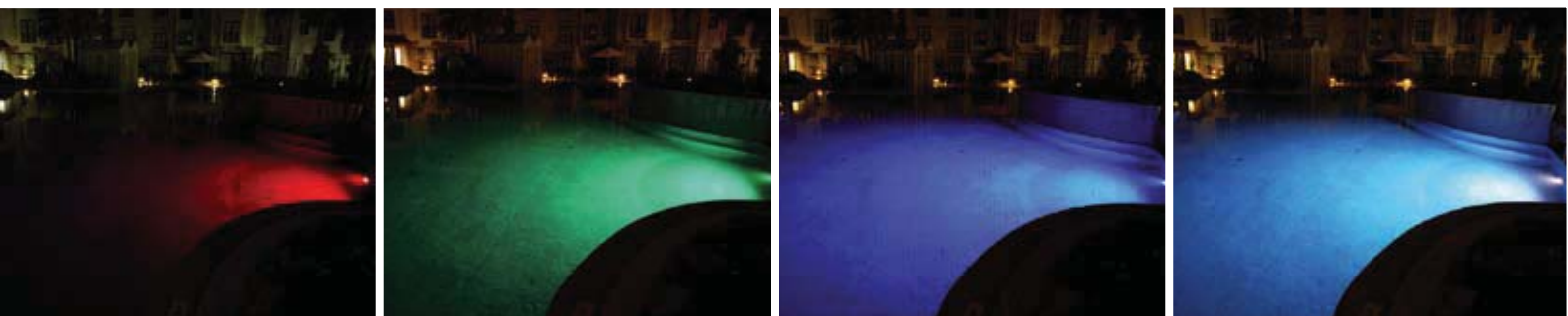
LumiPlus PAR 56

Available in white or coloured lighting. ABS niche and ABS or stainless steel faceplate. Available with or without inserts. Options with niche with a new closing system or without niche.



o se adapta a los nuevos nichos de la PAR 56.
can only be used with the new PAR 56 niches.

Technical characteristics and advantages



LEDs- Intense, long-lasting colours

- LEDs, or “Light Emitting Diodes” were developed during the 1960s and are seen as THE TECHNOLOGY of the future.
- They are widely used in electronic equipment, games, domestic appliances, traffic lights etc. Normally, these use low-intensity LEDs. With the appearance of high-intensity LEDs, this technology has been applied to the car industry and will soon become a major source of home lighting
- Light is produced as electricity flows through them and, as they do not feature filaments, they cannot burn out or break. The end result is a light source which lasts 100 times longer than a traditional light bulb with much lower consumption.

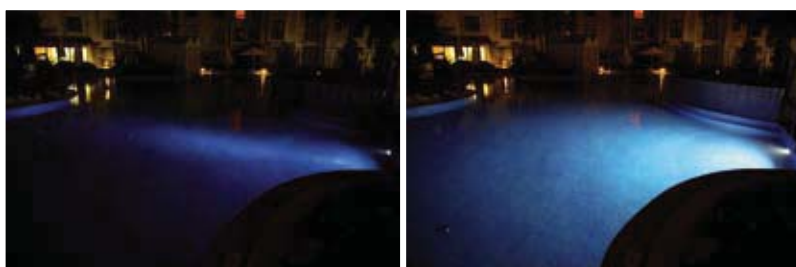
Advantages of LEDs

- Among the many advantages, perhaps the most important is their high level of efficiency, in other words, their high levels of performance, along with their long life

LED is not the same as LED!

- There are various types of LED: High Power LED and Low Power (5mm)
LED The LEDs used in AstralPool systems are Luxeon High Power LEDs (1W and 3W).

Projector LED's PAR-56 LumiPlus
alta luminosidad (blanca)
High power
Lumiplus PAR-56 (white)



Tips from Dr.Pool

- The remote control has a range of 100 metres of open field.
- Commands sent via the remote control always override those from the modulator-receptor. The remote control should be switched off when using the pushbuttons on the modulator-receptor in order to prevent interference.
- We recommend the installation of 1 LumiPlus for every 20m² of water surface.
- In installations where users wish to replace conventional pool lighting with LumiPlus, LEDs whilst making use of existing cabling underwater resin joints must be used, from the underwater connections kit (code n° 32803).

Control systems



Pushbutton

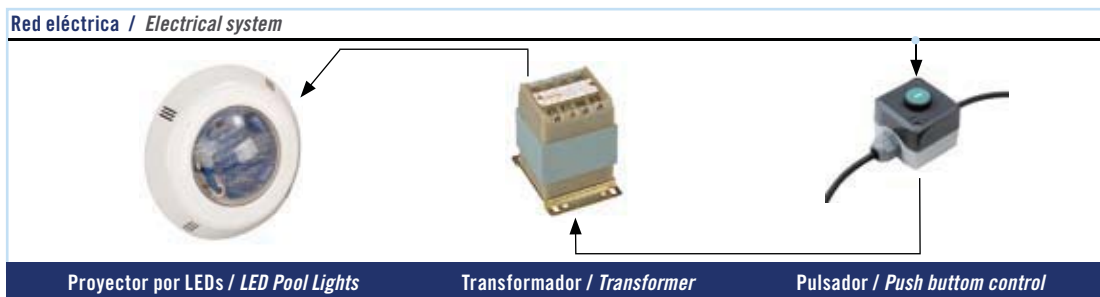
- Normally closed (NC) pushbutton allowing you to control up to 12 underwater lights: colour and sequence changes.
- 7 colours + 7 sequences.
- Supplied in a totally watertight case and connection cables.

Receiver-modulator and remote control

- These allow full control of up to 15 underwater lights: turn on, shut off, colour and sequence changes, time-delay shut off.
- The remote control also allows the deactivation of undesired colours in the different sequences.
- 12 colours + 9 sequences.

Esquema de instalación de los dos sistemas de control Installation diagramme for the two control systems

Instalación con pulsador Installation with pushbutton switch



Instalación con receptor modulador y/o control remoto Installation with modulator receptor and/or remote control



Mando a distancia
Remote control

